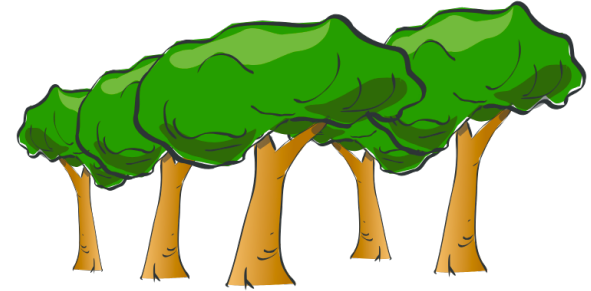


**What's better
than a tree?**

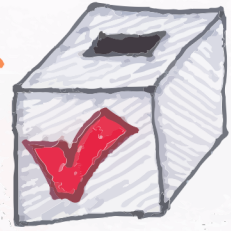
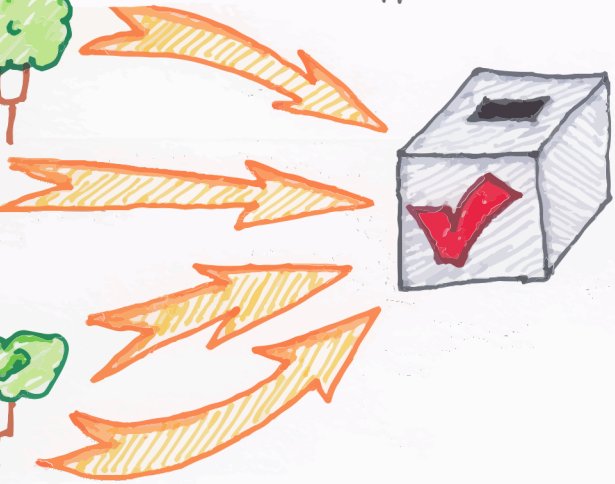
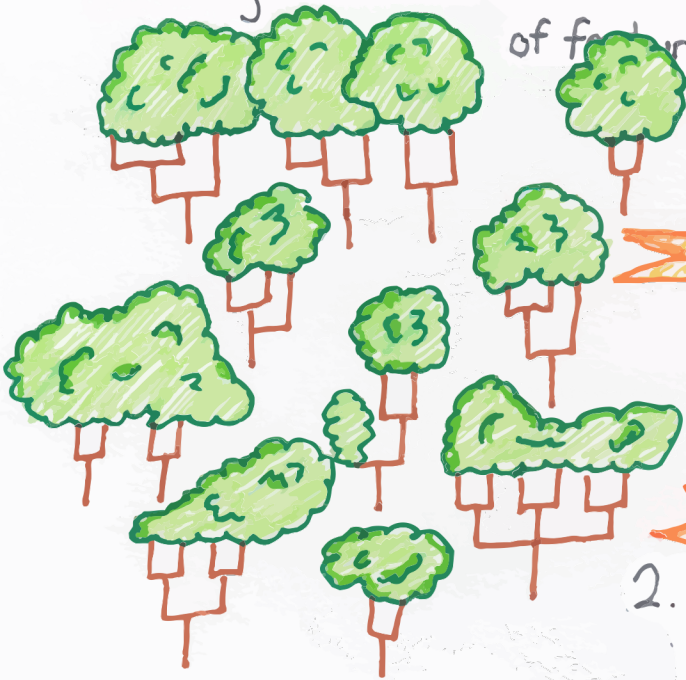
Random Forest



- Can often improve performance of decision tree classifiers using a set of decision trees (a forest)
- Each tree trained on a random subset of training data
- Classify a data instance using all trees
- Combine answers to make classification
 - E.g., vote for most common class

RANDOM FOREST CLASSIFICATION

1) Many trees are created using random subsets of features and bootstrapped data.



3) Votes are tallied to reach the final prediction.

2. Each tree votes by predicting target class.

CHRIS ALBON

cf. Wisdom of the Crowd



- Statistician Francis Galton observed a 1906 contest to guess an ox's weight at a country fair. 800 people entered. He noted that their average guess (1,197lb) was very close to the actual weight (1,198lb)
- When getting human annotations training data for machine learning, standard practice is get ≥ 3 annotations and take majority vote

Random Forests Benefits

- Decision trees not the strongest modeling approach
- Random forests make them much stronger
- => more **robust** than a single decision tree
 - Limit overfitting to given dataset
 - Reduce errors due to training data bias
 - Stable performance if some noise added to training data

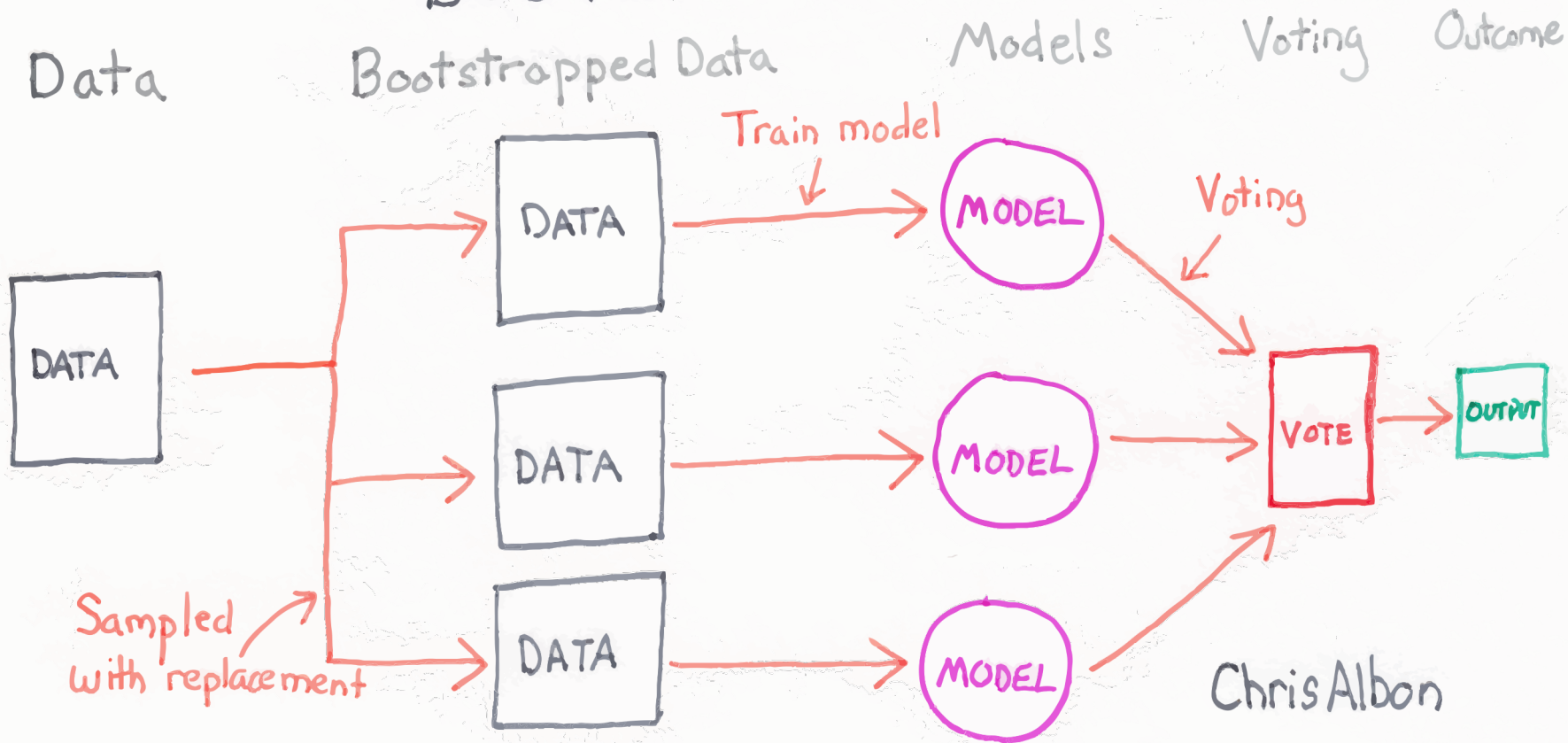
Bagging



- Idea can be used on any classifier!
- Improve classification by combining classifications of randomly selected training subsets
- Bagging = *Bootstrap aggregating*
ensemble meta-algorithm that can improve stability & accuracy of algorithms for statistical classification and regression
- Helps avoid overfitting
- AKA ensembling

BAGGING

BOOTSTRAP AGGREGATION



Choosing training data subsets



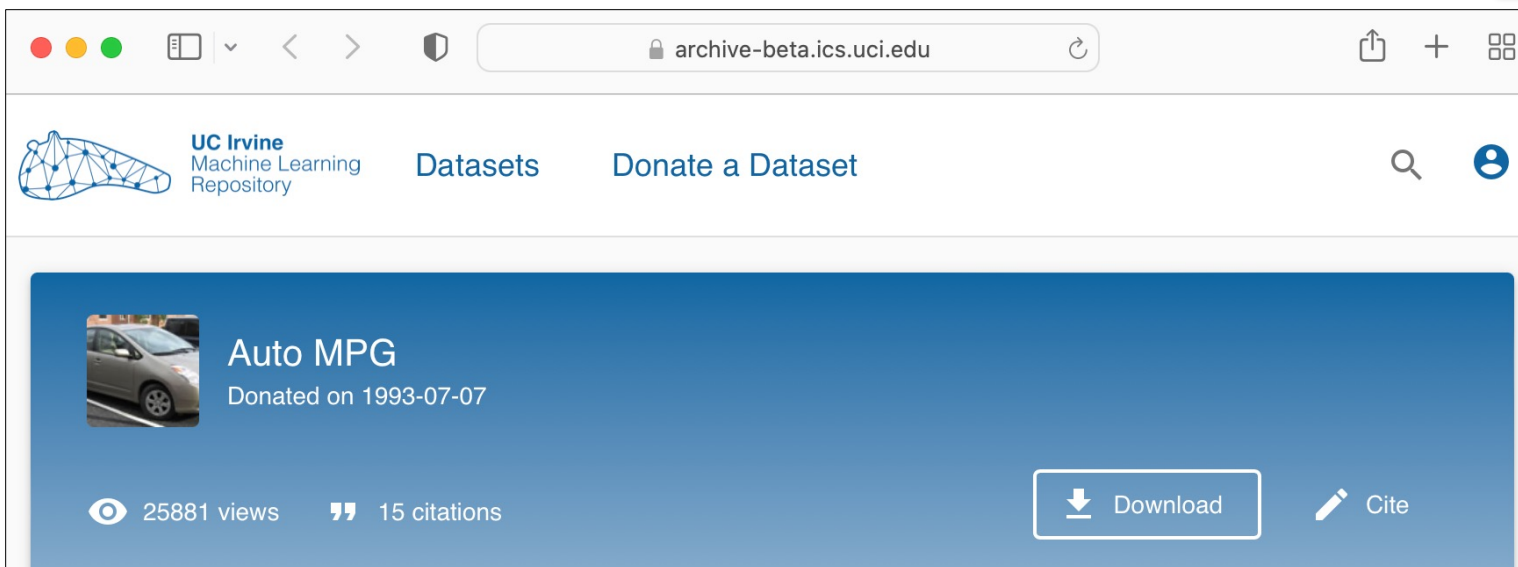
- **Classic bagging:** select random subset of training instances with replacement
- **Pasting:** select random subset of training instances (i.e., without replacement)
- **Random Subspaces:** use all training instances, but with a random subset of features
- **Random Patches:** random subset of instances and random subset of features
- **Best?** depends on problem, training data, algorithm

Examples

- Two examples using Weka
 - UCI Auto mpg prediction dataset
 - UCI Adult income prediction dataset
- RandomForest improves over J48 for the smaller dataset, but not for the larger
- Takeaway: more data is always best

UCI Auto MPG Dataset

kaggle



The screenshot shows a web browser window with the URL `archive-beta.ics.uci.edu`. The page header includes the UC Irvine Machine Learning Repository logo, navigation links for "Datasets" and "Donate a Dataset", and search and user icons. The main content area features a blue header for the "Auto MPG" dataset, which was donated on 1993-07-07. Below the header, it displays "25881 views" and "15 citations". There are "Download" and "Cite" buttons. A sidebar on the left contains links for "General Information" and "Abstract".

398 instances with 8 attributes from 1983:

1. **mpg**: continuous; 2. **cylinders**: multi-valued discrete; 3. **displacement**: continuous; 4. **horsepower**: continuous; 5. **weight**: continuous; 6. **acceleration**: continuous; 7. **model year**: multi-valued discrete; 8. **origin**: multi-valued discrete; 9. **car name**: string (unique for each instance)

Predict MPG
from other 7
attributes

Arff [training data](#) (240); [test data](#) (132)

Preprocess Classify Cluster Associate Select attributes Visualize

Classifier

Choose J48 -C 0.25 -M 2

Test options

 Use training set Supplied test set Set... Cross-validation Folds 10 Percentage split % 66

More options...

(Nom) origin

Start

Stop

Result list (right-click for options)

13:34:23 - trees.J48
 13:36:38 - trees.RandomForest
 13:41:57 - trees.RandomForest
 13:45:38 - trees.J48

Classifier output

Time taken to build model: 0.01 seconds

=== Evaluation on training set ===

Time taken to test model on training data: 0 seconds

=== Summary ===

```

Correctly Classified Instances      230           95.8333 %
Incorrectly Classified Instances    10            4.1667 %
Kappa statistic                    0.9174
Mean absolute error                 0.0453
Root mean squared error             0.1505
Relative absolute error             13.4303 %
Root relative squared error        36.7193 %
Total Number of Instances          240
  
```

=== Detailed Accuracy By Class ===

	TP Rate	FP Rate	Precision	Recall	F-Measure	MCC	ROC Area	PRC Area	Class
	0.987	0.025	0.987	0.987	0.987	0.963	0.998	0.998	1
	0.881	0.015	0.925	0.881	0.902	0.883	0.991	0.954	2
	0.923	0.025	0.878	0.923	0.900	0.880	0.989	0.921	3
Weighted Avg.	0.958	0.023	0.959	0.958	0.958	0.935	0.995	0.978	

=== Confusion Matrix ===

```

a  b  c  <-- classified as
157 1  1 | a = 1
 1 37 4 | b = 2
 1  2 36 | c = 3
  
```

Avg F1 = 0.98 very high!

Status

OK

Log

x 0

Preprocess Classify Cluster Associate Select attributes Visualize

Classifier

Choose **RandomForest -P 100 -I 100 -num-slots 1 -K 0 -M 1.0 -V 0.001 -S 1**

Test options

 Use training set Supplied test set Set... Cross-validation Folds 10 Percentage split % 66

More options...

(Nom) origin

Start

Stop

Result list (right-click for options)

13:34:23 - trees.J48

13:36:38 - trees.RandomForest

13:41:57 - trees.RandomForest

Classifier output

Time taken to build model: 0.1 seconds

=== Evaluation on training set ===

Time taken to test model on training data: 0.01 seconds

=== Summary ===

```

Correctly Classified Instances      240          100    %
Incorrectly Classified Instances    0              0    %
Kappa statistic                     1
Mean absolute error                 0.0674
Root mean squared error             0.114
Relative absolute error             19.9659 %
Root relative squared error         27.8064 %
Total Number of Instances          240

```

=== Detailed Accuracy By Class ===

	TP Rate	FP Rate	Precision	Recall	F-Measure	MCC	ROC Area	PRC Area	Class
	1.000	0.000	1.000	1.000	1.000	1.000	1.000	1.000	1
	1.000	0.000	1.000	1.000	1.000	1.000	1.000	1.000	2
	1.000	0.000	1.000	1.000	1.000	1.000	1.000	1.000	3
Weighted Avg.	1.000	0.000	1.000	1.000	1.000	1.000	1.000	1.000	

=== Confusion Matrix ===

```

a  b  c  <-- classified as
159 0  0 | a = 1
 0 42 0 | b = 2
 0  0 39 | c = 3

```

Avg F1 = 1.0 perfect!

Status

OK

Log

 x 0

100% ... Wait, What ?



- Results are too good to be true!
 - Something must be wrong
- ML results tend to be asymptotic
 - Asymptotic lines approach a curve but never touch
- Closer you get to $F1=1.0$, the harder it is to improve
- What did we do wrong?

Results are too good

- Relatively small dataset allows construction of a DT model that does very well
- Using Random Forest still got perfect results!
- We trained and tested on the same data!
- Very poor methodology since it overfits to this particular training set
- This training dataset has a separate test data set
 - We can also try 10-fold cross validation

Preprocess Classify Cluster Associate Select attributes Visualize

Classifier

Choose J48 -C 0.25 -M 2

Test options

- Use training set
- Supplied test set
- Cross-validation Folds 10
- Percentage split % 66

(Nom) origin

Result list (right-click for options)

13:34:23 - trees.J48

Classifier output

Size of the tree : 49

Time taken to build model: 0.02 seconds

=== Evaluation on test set ===

Time taken to test model on supplied test set: 0 seconds

=== Summary ===

```

Correctly Classified Instances      112           84.8485 %
Incorrectly Classified Instances    20            15.1515 %
Kappa statistic                    0.7255
Mean absolute error                 0.1198
Root mean squared error             0.2915
Relative absolute error             32.9443 %
Root relative squared error        66.1432 %
Total Number of Instances          132

```

=== Detailed Accuracy By Class ===

	TP Rate	FP Rate	Precision	Recall	F-Measure	MCC	ROC Area	PRC Area	Class
	0.987	0.127	0.916	0.987	0.950	0.877	0.967	0.962	1
	0.650	0.063	0.650	0.650	0.650	0.588	0.851	0.660	2
	0.657	0.062	0.793	0.657	0.719	0.735	0.887	0.690	3
Weighted Avg.	0.848	0.100	0.843	0.848	0.843	0.769	0.928	0.844	

=== Confusion Matrix ===

```

a b c <-- classified as
76 0 1 | a = 1
2 13 5 | b = 2
5 7 23 | c = 3

```

Avg F1 = 0.843 good

Status

OK



x 0

Preprocess Classify Cluster Associate Select attributes Visualize

Classifier

Choose RandomForest -P 100 -I 100 -num-slots 1 -K 0 -M 1.0 -V 0.001 -S 1

Test options

 Use training set
 Supplied test set Set...

 Cross-validation Folds 10

 Percentage split % 66

More options...

(Nom) origin

Start

Stop

Result list (right-click for options)

13:34:23 - trees.J48

13:36:38 - trees.RandomForest

Classifier output

Bagging with 100 iterations and base learner

weka.classifiers.trees.RandomTree -K 0 -M 1.0 -V 0.001 -S 1 -do-not-check-capabilities

Time taken to build model: 0.09 seconds

=== Evaluation on test set ===

Time taken to test model on supplied test set: 0.01 seconds

=== Summary ===

```

Correctly Classified Instances      115           87.1212 %
Incorrectly Classified Instances    17           12.8788 %
Kappa statistic                    0.7653
Mean absolute error                 0.1642
Root mean squared error             0.2605
Relative absolute error             45.1528 %
Root relative squared error         59.0951 %
Total Number of Instances          132

```

=== Detailed Accuracy By Class ===

	TP Rate	FP Rate	Precision	Recall	F-Measure	MCC	ROC Area	PRC Area	Class
	0.974	0.164	0.893	0.974	0.932	0.831	0.988	0.992	1
	0.750	0.036	0.789	0.750	0.769	0.730	0.961	0.838	2
	0.714	0.041	0.862	0.714	0.781	0.718	0.965	0.910	3
Weighted Avg.	0.871	0.112	0.869	0.871	0.867	0.785	0.978	0.947	

=== Confusion Matrix ===

```

a b c <-- classified as
75 1 1 | a = 1
2 15 3 | b = 2
7 3 25 | c = 3

```

Avg F1 = 0.867 better

Status

OK

Log

x 0

New AUTO MPG Results

- Using an independent test set shows more realistic balanced F1 score of **.843**
- Using Random Forest raises this to **.867**
- While the increase is not large, it is probably statistically significant
- F1 scores this high are difficult to increase dramatically
 - Human scores for many tasks are often in this range (i.e., 0.8 – 0.9)

UCI Adult Census Income Dataset

kaggle



UC Irvine
Machine Learning
Repository

Datasets

Donate a Dataset



Adult

Donated on 1996-05-01

78349 views

256 citations



Download



Cite

General Information

Abstract

Predict whether income exceeds

~49K instances with 15 attributes from 1994:
1. **>50K:** binary; **age:** continuous. **workclass:** Private, Self-emp-not-inc, Self-emp-inc, Federal-gov, Local-gov, State-gov, Without-pay, Never-worked. **fnlwgt:** continuous. **education:** Bachelors, Some-college, 11th, HS-grad, Prof-school, ...

Predict income
>50k from 15
attributes

Arff [data](#)

Preprocess Classify Cluster Associate Select attributes Visualize

Classifier

Choose J48 -C 0.25 -M 2

Test options

Use training set

Supplied test set Set...

Cross-validation Folds 10

Percentage split % 66

More options...

(Nom) class

Start

Stop

Result list (right-click for options)

23:21:30 - trees.J48

Classifier output

Size of the tree : 911

Time taken to build model: 2.64 seconds

=== Evaluation on training set ===

Time taken to test model on training data: 0.16 seconds

=== Summary ===

Correctly Classified Instances	42803	87.6356 %
Incorrectly Classified Instances	6039	12.3644 %
Kappa statistic	0.6325	
Mean absolute error	0.1861	
Root mean squared error	0.3048	
Relative absolute error	51.1076 %	
Root relative squared error	71.4388 %	
Total Number of Instances	48842	

=== Detailed Accuracy By Class ===

	TP Rate	FP Rate	Precision	Recall	F-Measure	MCC	ROC Area	PRC Area	Class
	0.631	0.046	0.810	0.631	0.710	0.640	0.907	0.792	>50K
	0.954	0.369	0.891	0.954	0.921	0.640	0.907	0.960	<=50K
Weighted Avg.	0.876	0.292	0.872	0.876	0.871	0.640	0.907	0.920	

=== Confusion Matrix ===

a	b	←-- classified as	
7375	4312	a = >50K	
1727	35428	b = <=50K	

Status

OK

Log



x 0

Classifier

Choose **RandomForest -P 100 -I 100 -num-slots 1 -K 0 -M 1.0 -V 0.001 -S 1**

Test options

Use training set

Supplied test set

Set...

Cross-validation Folds 10

Percentage split % 66

More options...

(Nom) class

Start

Stop

Result list (right-click for options)

23:21:30 - trees.J48

23:23:27 - trees.RandomForest

Classifier output

```

bagging with 100 iterations and base learner
weka.classifiers.trees.RandomTree -K 0 -M 1.0 -V 0.001 -S 1 -do-not-check-capabilities

Time taken to build model: 15.17 seconds

=== Evaluation on training set ===

Time taken to test model on training data: 6.52 seconds

=== Summary ===

Correctly Classified Instances      48774           99.8608 %
Incorrectly Classified Instances    68              0.1392 %
Kappa statistic                    0.9962
Mean absolute error                 0.0737
Root mean squared error             0.1263
Relative absolute error             20.2565 %
Root relative squared error         29.6022 %
Total Number of Instances          48842

=== Detailed Accuracy By Class ===

                TP Rate  FP Rate  Precision  Recall  F-Measure  MCC      ROC Area  PRC Area  Class
                0.995   0.000   1.000     0.995   0.997     0.996   1.000    1.000    >50K
                1.000   0.005   0.998     1.000   0.999     0.996   1.000    1.000    <=50K
Weighted Avg.   0.999   0.004   0.999     0.999   0.999     0.996   1.000    1.000

=== Confusion Matrix ===

  a    b  <-- classified as
11624  63 |  a = >50K
  5 37150 |  b = <=50K
    
```

Status

OK

Log



Result

- Significant increase on F1 scores when both trained and evaluated on training set
- This is considered to be poor methodology since it overfits to the particular training set

Create train and test collection

- Train has ~95% of data, test 5%
- Trained models for J48 and random forest using train dataset
- Tested on test data set
- Results were that random forest was (at best) about the same as J48
- Large dataset reduced problem of overfitting, so random forest did not help

Classifier

Choose J48 -C 0.25 -M 2

Test options

 Use training set Supplied test set Cross-validation Folds 10 Percentage split % 66

(Nom) class

Start

Stop

Result list (right-click for options)

23:21:30 - trees.J48
 23:23:27 - trees.RandomForest
 15:13:52 - trees.J48
 15:18:26 - trees.RandomForest
 15:24:51 - trees.RandomForest from file 'adult_rf_model_train.model'
 15:26:49 - trees.RandomForest
 15:30:31 - trees.RandomForest from file 'adult_rf_model_train.model'
 15:39:00 - trees.J48
 15:40:15 - trees.J48

Classifier output

Number of Leaves : 620

Size of the tree : 795

Time taken to build model: 1.86 seconds

=== Evaluation on test set ===

Time taken to test model on supplied test set: 0 seconds

=== Summary ===

Correctly Classified Instances	2155	86.2 %
Incorrectly Classified Instances	345	13.8 %
Kappa statistic	0.5988	
Mean absolute error	0.1931	
Root mean squared error	0.3196	
Relative absolute error	52.5531 %	
Root relative squared error	74.1954 %	
Total Number of Instances	2500	

=== Detailed Accuracy By Class ===

	TP Rate	FP Rate	Precision	Recall	F-Measure	MCC	ROC Area	PRC Area	Class
	0.611	0.056	0.780	0.611	0.686	0.606	0.895	0.759	>50K
	0.944	0.389	0.880	0.944	0.912	0.606	0.895	0.953	<=50K
Weighted Avg.	0.862	0.307	0.856	0.862	0.856	0.606	0.895	0.905	

=== Confusion Matrix ===

```

a  b  <-- classified as
376 239 | a = >50K
106 1779 | b = <=50K

```

F = 0.856

Status

OK

Log



x 0

Classifier

Choose RandomForest -P 100 -I 100 -num-slots 1 -K 0 -M 1.0 -V 0.001 -S 1

Test options

Use training set
 Supplied test set
 Cross-validation Folds
 Percentage split %

(Nom) class

Start

Stop

Result list (right-click for options)

- 23:21:30 - trees.J48
- 23:23:27 - trees.RandomForest
- 15:13:52 - trees.J48
- 15:18:26 - trees.RandomForest
- 15:24:51 - trees.RandomForest from file 'adult_rf_model_train.model'
- 15:26:49 - trees.RandomForest
- 15:30:31 - trees.RandomForest from file 'adult_rf_model_train.model'

Classifier output

```

RandomForest
Bagging with 100 iterations and base learner
weka.classifiers.trees.RandomTree -K 0 -M 1.0 -V 0.001 -S 1 -do-not-check-capabilities
=== Re-evaluation on test set ===
    
```

```

User supplied test set
Relation:  adult
Instances:  unknown (yet). Reading incrementally
Attributes: 15
    
```

=== Summary ===

Correctly Classified Instances	2146	85.84	%
Incorrectly Classified Instances	354	14.16	%
Kappa statistic	0.59		
Mean absolute error	0.195		
Root mean squared error	0.3272		
Total Number of Instances	2500		

=== Detailed Accuracy By Class ===

	TP Rate	FP Rate	Precision	Recall	F-Measure	MCC	ROC Area	PRC Area	Class
	0.610	0.060	0.767	0.610	0.679	0.596	0.893	0.765	>50K
	0.940	0.390	0.881	0.940	0.909	0.596	0.893	0.959	<=50K
Weighted Avg.	0.858	0.309	0.853	0.858	0.853	0.596	0.893	0.911	

=== Confusion Matrix ===

```

  a  b  <-- classified as
375 240 | a = >50K
114 1771 | b = <=50K
    
```

F = 0.853

Status

OK

Log



Conclusions

- Bagging helps, especially if training data adequate, but not as large as it should be
 - With lots of data, [overfitting](#) less of a problem, so bagging may not help
- While we explore it using decision trees, it can be applied to any classifier
 - Scikit-learn has a general module for bagging
- In general, using any of several **ensemble** approaches to classification often helpful
- Training neural networks uses a different approach ([dropout](#)) to control overfitting

Conclusions

- Wait, there's more...
- A classification problem can change over time
 - E.g.: recognizing a spam message from its content and metadata
- We showed that an ensemble approach can detect a change in the nature of spam
 - Which tells us its time to retrain with new data
 - D. Chinavle, P. Kolari, T. Oates, and T. Finin, Ensembles in Adversarial Classification for Spam, ACM CIKM, 2009. [link](#)

Recognizing Concept Drift

- Build ensemble of five models to classify spam comments left on a blog at time T1
- Note the relative level of agreement
- Detect when one of the models starts to diverge from the others with at time T2
 - Time to get new data and retrain
 - Examining disagreements can be enlightening
- Used temporal data spanning several years to prove effectiveness
 - E.g., spam focus shift from *viagra* to *weight loss*